

Improve your indoor  
climate and lower your  
heating costs - with  
the warm edge for your  
home.

Engineered in Switzerland

**| swisspacer |**  
SAINT-GOBAIN

the edge  
of tomorrow

  
SAINT-GOBAIN



Good window frames and high-quality glazing units alone are no guarantee of well insulated energy-saving windows. There is one small detail that can make all the difference and considerably minimise heat loss.

The spacer bar between the insulating glass panes is decisive for the insulation properties of a window as the connecting element between indoors and outdoors.

With the warm edge from Swisspacer, you save energy, CO<sub>2</sub> and money over the entire life span of the window. The comfort of your home also improves considerably with a well insulated glazing edge.

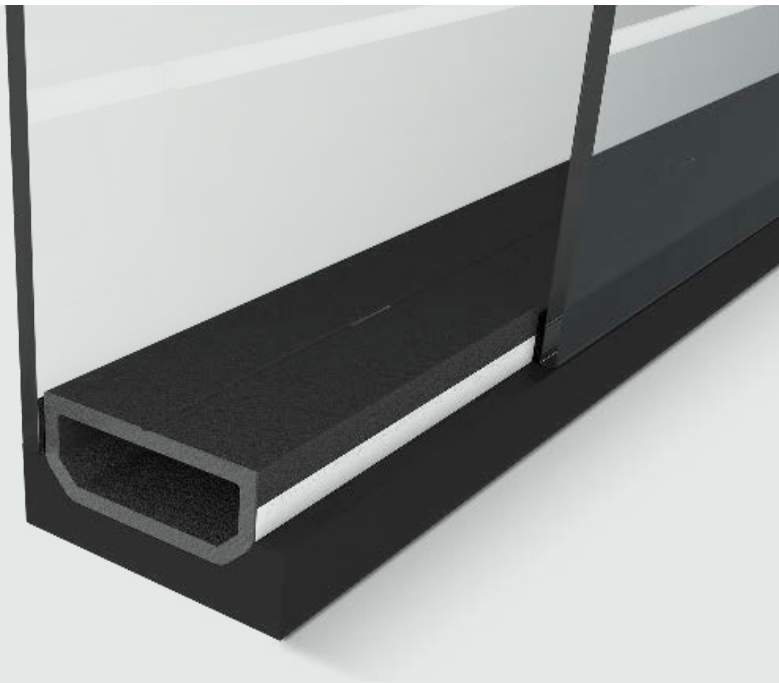
### **Building comfortably with Swisspacer.**

Swisspacer spacer bars improve living comfort: when the glass edge stays warm, condensation won't form here. Swisspacer avoids the danger of bacteria and mould forming, which could both impair your health. It has been demonstrated that a window with a well insulated glass edge also delivers more comfort – because lower temperature differences between room temperature and the building envelope ensure less convection. In simple terms: no disruptive draughts happen at the window. So Swisspacer contributes to you feeling good in your home, whatever the time of year.

### **Building aesthetically with Swisspacer**

The colour range of our spacer bars allows you to give your home design accents of your choice – whether you select spacer bars to go with the frame profile or deliberately prefer a strong contrast. Swisspacer offers 17 colours – the biggest selection on the market.

The velvety matt surface without disruptive metallic reflections in sunlight underscores the high quality of the Swisspacer warm edge. A small detail that will delight you in your home for many years to come.



## Building sustainably with Swisspacer

Energy savings are not only financially beneficial, they also reduce CO<sub>2</sub> emissions – every day over many years. Swisspacer products also impress with their low carbon footprint: the Environmental Product Declaration (EPD) provides transparent data on the Global Warming Potential and supports architects and planners in meeting the requirements for sustainability certifications such as LEED, BREEAM and DGNB.

## Reducing heating costs with Swisspacer

A warm edge spacer bar with low thermal conductivity prevents a cold bridge forming on the glass edge. Thanks to this small component, the cold stays reliably outside in winter and the warmth inside the house. In summer, however, the heat cannot enter so easily and the cool air remains indoors as desired, helping to reduce the energy consumption of the air conditioner. Windows equipped with Swisspacer spacer bars, therefore, save energy costs.

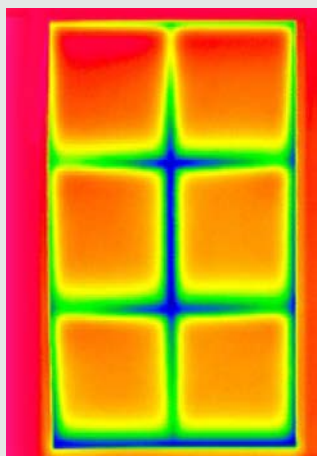
According to a scientific study, around 18% of the warmth is lost through the windows in an uninsulated single-family home. By using Swisspacer, you can save up to 5% of your heating costs.

The reason for this is the use of a very stable plastic, which insulates extremely well compared to conventional aluminium products. A high-tech foil on the invisible rear side of the spacer bar ensures that the gas filling in the cavity between the panes cannot escape to the outside air and water vapour cannot penetrate inside. In this way, the quality of your window is retained for many years.

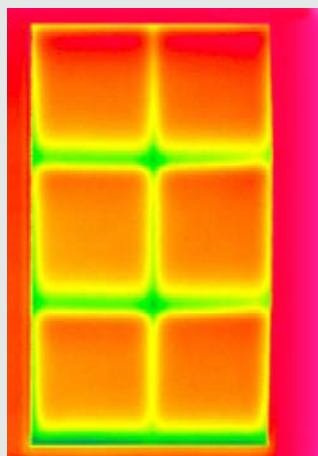
The portfolio comprises different performance classes:

**ULTIMATE** offers the best performance,  
**ADVANCE** an optimal price-performance ratio.

**Without Swisspacer:**  
 cold bridges appear in blue.



**With Swisspacer:**  
 glass edge and decorative bar areas are significantly warmer.



**Without Swisspacer:**  
 condensation formation with conventional spacer bars



**With Swisspacer:**  
 the Swisspacer warm edge avoids condensation





### **Rely on the market leader**

Swisspacer has been the technology and market leader in many countries around the world since 1998. With a large production and logistics network as well as excellent services, we are a reliable partner to many manufacturers of insulating glass units and makers of windows and façades.

### **Part of the Saint-Gobain Group**

Swisspacer belongs to the renowned Saint-Gobain Group. The group develops, manufactures and sells materials and solutions for the construction, mobility and healthcare markets, as well as for other industrial applications. The group's focus is on innovative products and solutions that make a special contribution to saving energy and protecting the environment, as well as increasing the quality of life.

Saint-Gobain was founded in 1665 in France and ranks among the world's top 100 industrial companies. The group employs 167,000 people and is represented in 70 countries.